



# QUICK START GUIDE

**Customer Care: 0800 093 1812**

*In case of emergency, contact your healthcare professional or emergency medical response.*

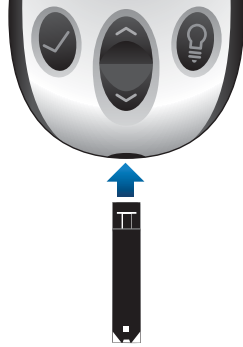
The AgaMatrix JAZZ Blood Glucose Monitoring System allows you to check your glucose levels with whole blood.

## Basic Steps (For complete instructions, see your AgaMatrix JAZZ Owner's Guide)

### 1 Insert the test strip into the meter:

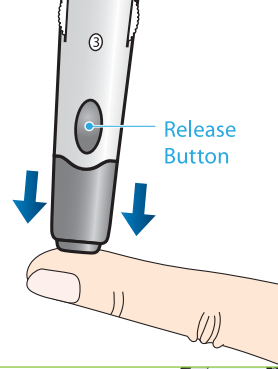
Insert the test strip, with the contact bars facing up, into the test strip port. The meter will be activated.

*CAUTION: To ensure accurate results, wash your hands with warm, soapy water and dry before every test.*



### 2 Lance test site:

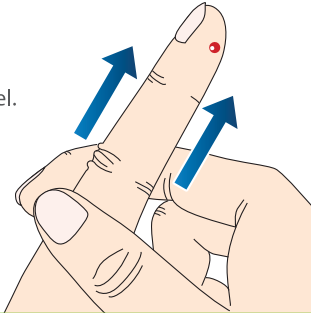
Press the lancing device against the test site and press the release button.



### 3 Express blood drop:

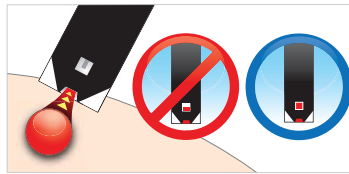
Wipe away the first blood drop that appears using a clean tissue or paper towel.

Squeeze from the base of your finger up towards the tip, until a second small blood drop forms.



### 4 Bring test strip to blood sample:

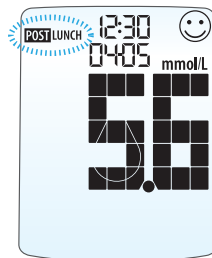
The AgaMatrix JAZZ Test Strip draws the blood into the test strip through the sample area.



### 5 When the meter beeps, remove the tip of the test strip from the blood:



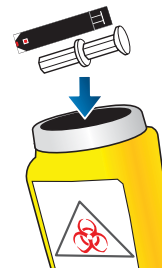
After a 1-2-3 countdown (scrolling bar on-screen), your result appears on the display.



Mealtime tag will be flashing. To confirm it, press the TICK button. To change it or for more details, see your owner's guide.

### 6 Finishing:

Remove the used test strip. The meter will automatically deactivate. Snap off the lancing device cap and remove the lancet. Properly discard the used test strip and lancet.

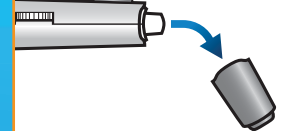


## Prepare the Lancing System

### WARNING:

The AgaMatrix lancing device MUST be used ONLY to obtain a blood sample by a single person for self-testing. Do not use any lancet or lancing device that has been used by another person.

### 1 Snap off the lancing device cap.



### 2 Insert a new lancet into the lancet holder cup.



### 3 Pull the lancet cap off.



### 4 Replace lancing device cap.



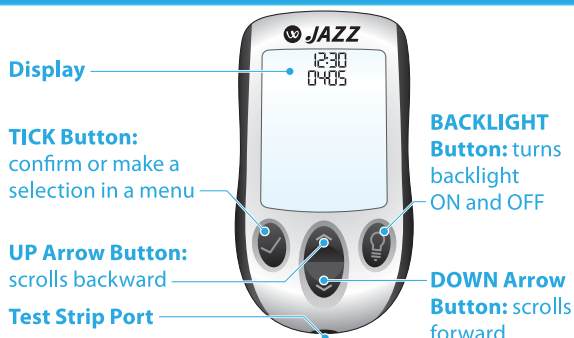
### 5 Set the lancing level.



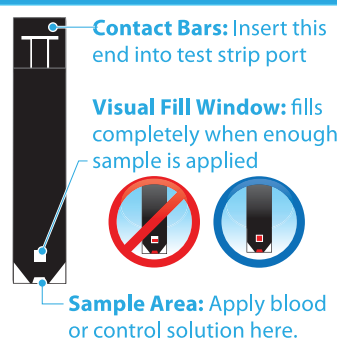
### 6 Pull the cocking handle out until it clicks.



## The AgaMatrix JAZZ Blood Glucose Meter



## The AgaMatrix JAZZ Test Strip



## The AgaMatrix Lancing System

